

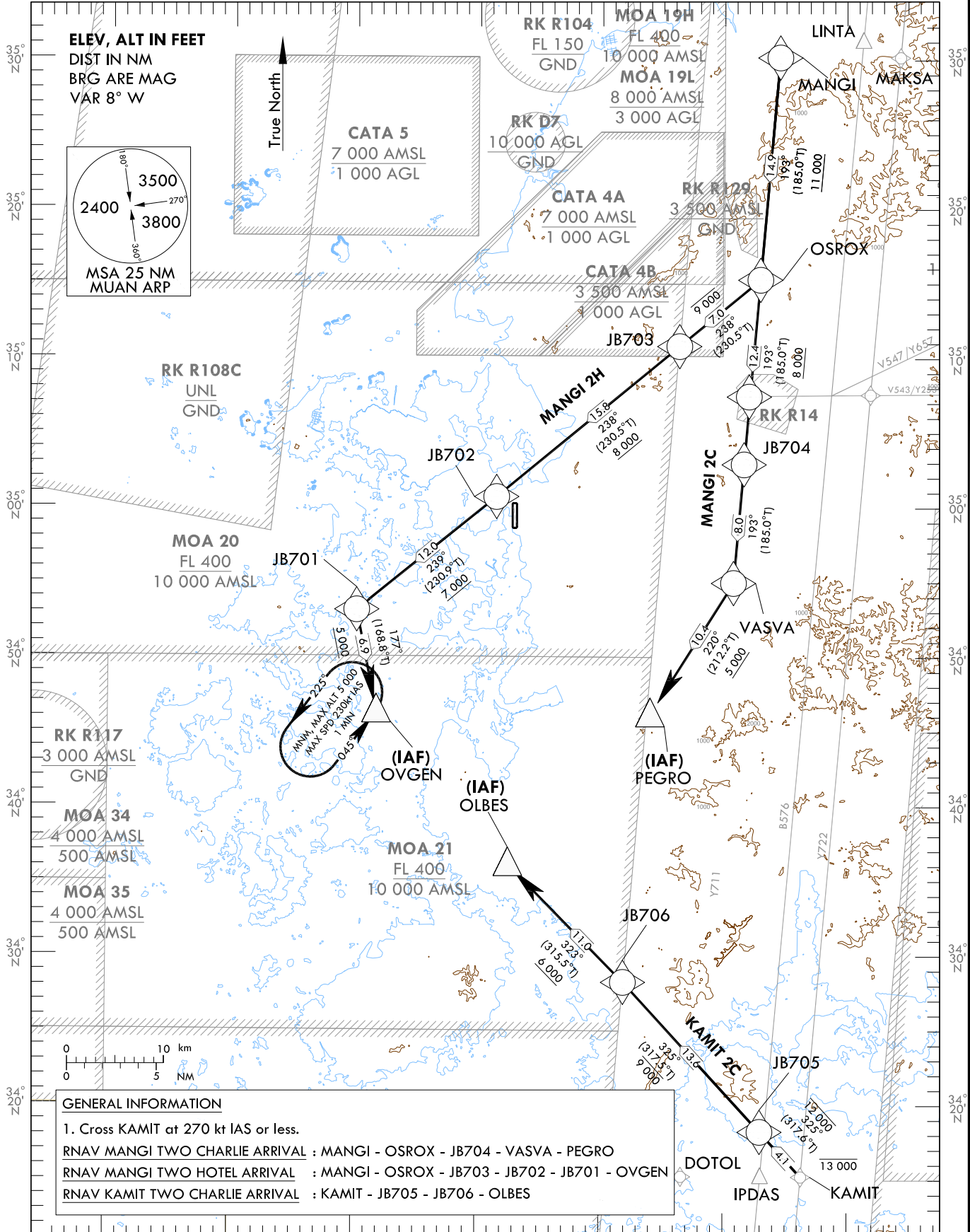
**STANDARD ARRIVAL CHART  
INSTRUMENT(STAR) - ICAO**

TRANSITION ALT 14 000  
TRANSITION LVL FL 140

GWANGJU APP	120.475	130.0
	228.9	265.5
MUAN TWR	118.25	118.85

**MUAN/Muan Intl(RKJB)**  
RWY 01  
RNAV MANGI 2C  
RNAV MANGI 2H  
RNAV KAMIT 2C

Note : Arrival under ICAO Flight Procedures.



**GENERAL INFORMATION**

- Cross KAMIT at 270 kt IAS or less.

RNAV MANGI TWO CHARLIE ARRIVAL : MANGI - OSROX - JB704 - VASVA - PEGRO  
 RNAV MANGI TWO HOTEL ARRIVAL : MANGI - OSROX - JB703 - JB702 - JB701 - OVGEN  
 RNAV KAMIT TWO CHARLIE ARRIVAL : KAMIT - JB705 - JB706 - OLBES

**NOTE**

- RNAV 1 operation.
- GNSS required.
- ATS surveillance service required.

Change : Information of standard instrument arrival procedure for RWY 01.

MUAN/Muan Intl(RKJB)  
RWY 01

RNAV MANGI 2C, RNAV MANGI 2H

RNAV KAMIT 2C, HOLDING PROCEDURE

AERONAUTICAL DATA TABULATION

Standard Instrument Arrival Procedure Coding Tables

RNAV MANGI 2C												
Serial Number	Path Descriptor	Waypoint Identifier	Fly-over	Course/Track °M(T)	Distance (NM)	Turn direction	Altitude (ft)	Speed (kt)	Coordinates	VPA/RDH	Navigation specification	Remarks
001	IF	MANGI	-	-	-	-	-	-	35°30'11.3"N 126°44'31.7"E	-	RNAV 1	-
002	TF	OSROX	-	193(185.0)	14.9	-	+11 000	-	35°15'18.1"N 126°42'56.2"E	-	RNAV 1	-
003	TF	JB704	-	193(185.0)	12.4	-	+8 000	-	35°02'56.4"N 126°41'37.3"E	-	RNAV 1	-
004	TF	VASVA	-	193(185.0)	8.0	-	-	-	34°54'59.5"N 126°40'46.8"E	-	RNAV 1	-
005	TF	PEGRO	-	220(212.2)	10.4	-	+5 000	-	34°46'09.0"N 126°34'02.1"E	-	RNAV 1	IAF

RNAV MANGI 2H												
Serial Number	Path Descriptor	Waypoint Identifier	Fly-over	Course/Track °M(T)	Distance (NM)	Turn direction	Altitude (ft)	Speed (kt)	Coordinates	VPA/RDH	Navigation specification	Remarks
001	IF	MANGI	-	-	-	-	-	-	35°30'11.3"N 126°44'31.7"E	-	RNAV 1	-
002	TF	OSROX	-	193(185.0)	14.9	-	+11 000	-	35°15'18.1"N 126°42'56.2"E	-	RNAV 1	-
003	TF	JB703	-	238(230.5)	7.0	-	-9 000	-	35°10'50.6"N 126°36'20.5"E	-	RNAV 1	-
004	TF	JB702	-	238(230.5)	15.8	-	+8 000	-	35°00'44.9"N 126°21'29.4"E	-	RNAV 1	-
005	TF	JB701	-	239(230.9)	12.0	-	+7 000	-	34°53'09.6"N 126°10'10.3"E	-	RNAV 1	-
006	TF	OVGEN	-	177(168.8)	6.9	-	+5 000	-	34°46'22.2"N 126°11'47.9"E	-	RNAV 1	IAF

RNAV KAMIT 2C												
Serial Number	Path Descriptor	Waypoint Identifier	Fly-over	Course/Track °M(T)	Distance (NM)	Turn direction	Altitude (ft)	Speed (kt)	Coordinates	VPA/RDH	Navigation specification	Remarks
001	IF	KAMIT	-	-	-	-	-13 000	-270	34°15'14.1"N 126°46'17.7"E	-	RNAV 1	-
002	TF	JB705	-	325(317.6)	4.1	-	-12 000	-270	34°18'14.7"N 126°42'58.8"E	-	RNAV 1	-
003	TF	JB706	-	325(317.5)	13.6	-	-9 000	-270	34°28'15.6"N 126°31'54.1"E	-	RNAV 1	-
004	TF	OLBES	-	323(315.5)	11.0	-	+6 000	-	34°36'08.1"N 126°22'32.0"E	-	RNAV 1	IAF

HOLDING PROCEDURE												
Holding Identification	Path Descriptor	Waypoint Identifier	Fly-over	Course/Track °M(T)	Time (min)	Turn direction	Altitude (ft)	Speed (kt)	Coordinates	VPA/RDH	Navigation specification	Remarks
RNAV MANGI 2H	HM	OVGEN	Y	045 (037.0)	1	L	@5 000	-230	34°46'22.2"N 126°11'47.9"E	-	RNAV 1	-

Change : Information of standard instrument arrival procedure for RWY 01.

**STANDARD ARRIVAL CHART  
INSTRUMENT(STAR) - ICAO**

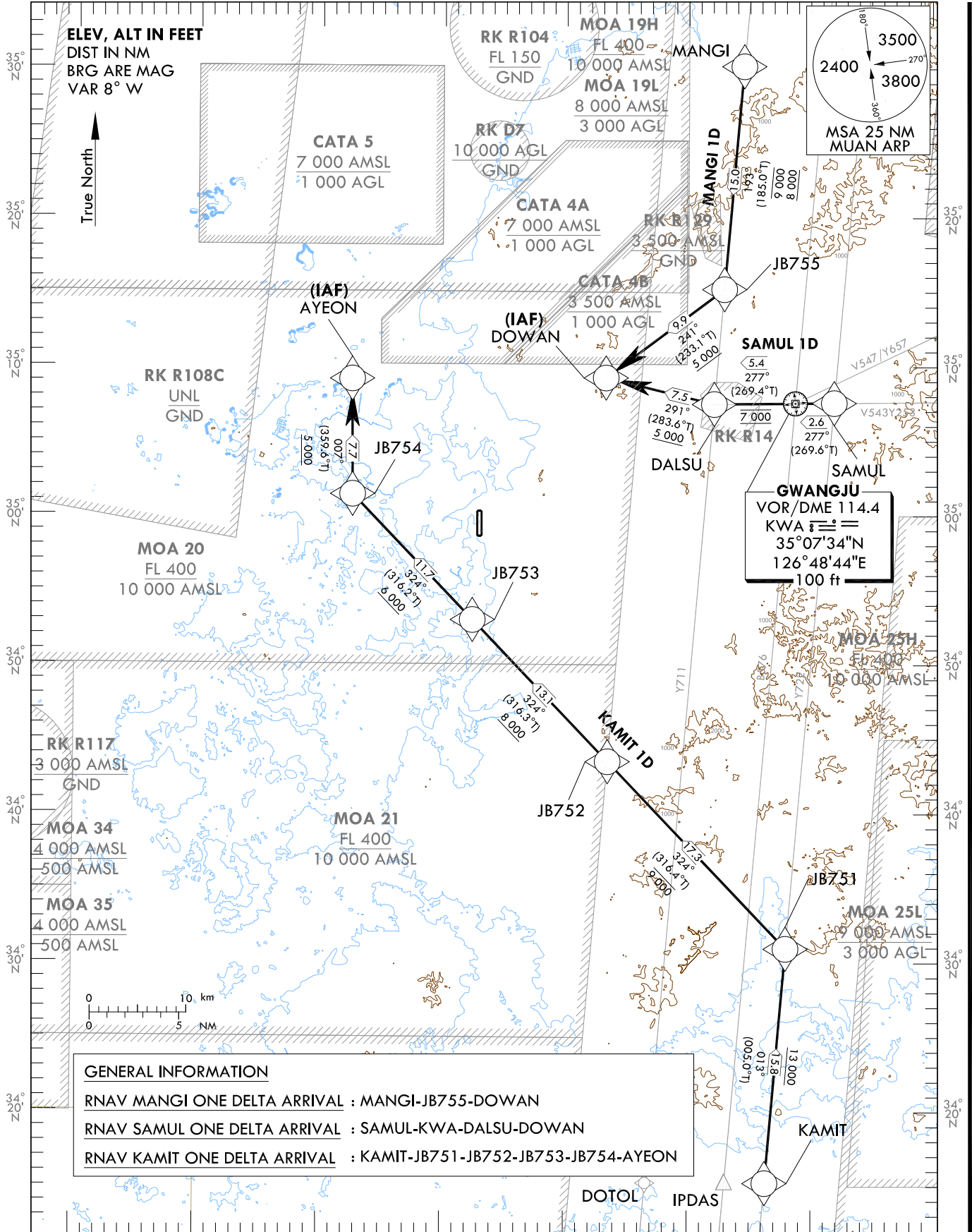
TRANSITION ALT 14 000  
TRANSITION LVL FL 140

GWANGJU APP	120.475	130.0
	228.9	265.5
MUAN TWR	118.25	118.85

**MUAN/Muan Intl(RKJB)**

RWY 19  
RNAV MANGI 1D  
RNAV SAMUL 1D  
RNAV KAMIT 1D

Note : Arrival under ICAO Flight Procedures.



**GENERAL INFORMATION**  
 RNAV MANGI ONE DELTA ARRIVAL : MANGI-JB755-DOWAN  
 RNAV SAMUL ONE DELTA ARRIVAL : SAMUL-KWA-DALSU-DOWAN  
 RNAV KAMIT ONE DELTA ARRIVAL : KAMIT-JB751-JB752-JB753-JB754-AYEON

**NOTE**  
 1. RNAV 1 operation.  
 2. GNSS required.  
 3. ATS surveillance service required.

Change : Information of standard instrument arrival procedure for RWY 19.

MUAN/Muan Intl(RKJB)  
RWY 19  
RNAV MANGI 1D, RNAV SAMUL 1D  
RNAV KAMIT 1D

AERONAUTICAL DATA TABULATION

Standard Instrument Arrival Procedure Coding Tables

RNAV MANGI 1D

Serial Number	Path Descriptor	Waypoint Identifier	Fly-over	Course/Track °M(°T)	Distance (NM)	Turn direction	Altitude (ft)	Speed (kt)	Coordinates	VPA/RDH	Navigation specification	Remarks
001	IF	MANGI	-	-	-	-	-	-	35°30'11.3"N 126°44'31.7"E	-	RNAV 1	-
002	TF	JB755	-	193(185.0)	15.0	-	-9 000 +8 000	-	35°15'13.4"N 126°42'55.7"E	-	RNAV 1	-
003	TF	DOWAN	-	241(233.1)	9.9	-	+5 000	-	35°09'16.1"N 126°33'16.0"E	-	RNAV 1	IAF

RNAV SAMUL 1D

Serial Number	Path Descriptor	Waypoint Identifier	Fly-over	Course/Track °M(°T)	Distance (NM)	Turn direction	Altitude (ft)	Speed (kt)	Coordinates	VPA/RDH	Navigation specification	Remarks
001	IF	SAMUL	-	-	-	-	-	-	35°07'35.5"N 126°51'54.4"E	-	RNAV 1	-
002	TF	KWA	-	277(269.6)	2.6	-	-	-	35°07'34.4"N 126°48'43.6"E	-	RNAV 1	-
003	TF	DALSU	-	277(269.4)	5.4	-	@7 000	-	35°07'31.0"N 126°42'06.5"E	-	RNAV 1	-
004	TF	DOWAN	-	291(283.6)	7.5	-	+5 000	-	35°09'16.1"N 126°33'16.0"E	-	RNAV 1	IAF

RNAV KAMIT 1D

Serial Number	Path Descriptor	Waypoint Identifier	Fly-over	Course/Track °M(°T)	Distance (NM)	Turn direction	Altitude (ft)	Speed (kt)	Coordinates	VPA/RDH	Navigation specification	Remarks
001	IF	KAMIT	-	-	-	-	-	-	34°15'14.1"N 126°46'17.7"E	-	RNAV 1	-
002	TF	JB751	-	013(005.0)	15.8	-	+13 000	-	34°30'57.9"N 126°47'58.1"E	-	RNAV 1	-
003	TF	JB752	-	324(316.4)	17.3	-	-9 000	-	34°43'31.2"N 126°33'28.6"E	-	RNAV 1	-
004	TF	JB753	-	324(316.3)	13.1	-	+8 000	-	34°53'01.3"N 126°22'26.0"E	-	RNAV 1	-
005	TF	JB754	-	324(316.2)	11.7	-	+6 000	-	35°01'25.8"N 126°12'36.4"E	-	RNAV 1	-
006	TF	AYEON	-	007(359.6)	7.7	-	+5 000	-	35°09'10.2"N 126°12'32.1"E	-	RNAV 1	IAF